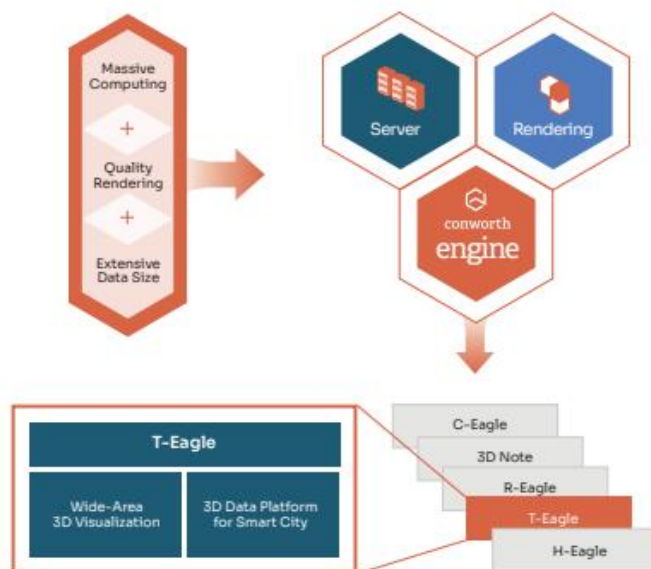


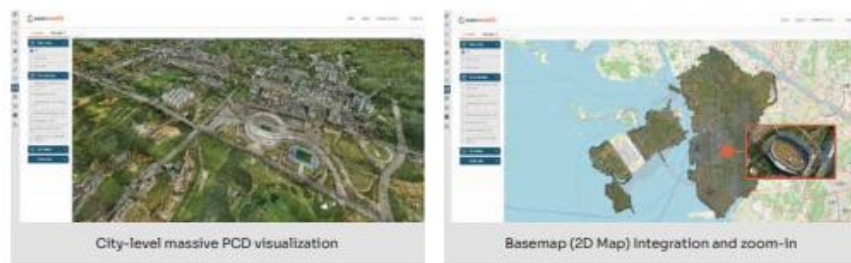
T-EAGLE

Large-Area 3D Visualization Solution

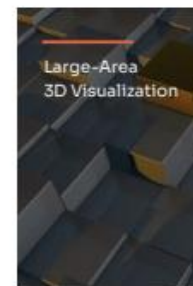
A 3D visualization solution for a smart city with spatial big data management and analysis using distributed server and graphic technology.



Application Cases



T-Eagle specializes in 3D visualizing large-scale point clouds and provides features for two main purposes: Large-Area 3D visualization and 3D data platform for smart city.



Large-Area 3D Visualization

- 3D Visualization of Large Regions (Metropolitan Level)
- Massive Point Cloud Data Processing (Spatial Big Data)
- A Full-3D Spatial Data Management
- Accumulation of Metropolitan-Level 3D Data



3D Data Platform for Smart City

- 3D Data Visualization for Digital Twin
- 3D Location-based Data Platform for Smart City
- 3D Flight Simulation for Path Planning
- 3D Big Data Management and Analysis

Application Cases

